


SAFETY PRECAUTIONS

 Please follow these safety precautions in order to ensure proper installation and to prevent any bodily injuries and structural failures.

Please note that this unit includes poles and rods that are made out of steel, which can cause bodily injuries and/or damages to the floor if dropped or held in an improper manner during assembly.

1. This unit is designed for use by keeping the poles fixed to the floor and the ceiling. Therefore, it is not safe for children to climb or hang on the unit. Children should be under adult supervision at all times to prevent any injuries.

2. Overloading the unit might cause it to become unstable and either tip or collapse, which may cause serious bodily injury and/or damage to personal possessions.

3. In order to prevent any accidental collapses due to improper care, install the unit, so that it is slightly tilted towards the wall, not perpendicular to the floor.

4. We recommend that you frequently examine the unit for any loose bolts or wobbling.

Please note

The unit may collapse if it is not securely fixed to the floor or if it is installed to a weak part of the ceiling.

Differentiating Between the Poles

The upper poles are thinner than the lower poles. (Make sure the upper poles attach to the ceiling mount and lower poles to the floor mount during installation.)

Inserting the Rods

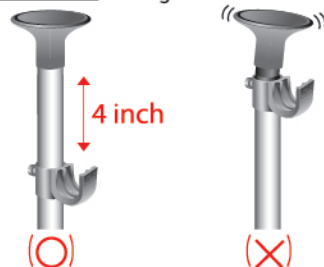
Insert the rods tightly into the rod bracket. (The rods are designed to support a maximum load of 175lbs. Please do not exceed the allowable load limits.)

Installing the Product in Areas with High Ceilings

Installation in areas with high ceilings may require a connecting pole (19.7 in.). Please contact customer service for more information.

Example

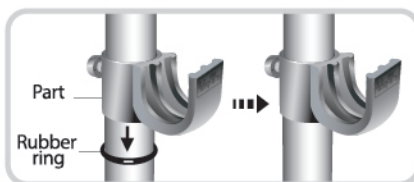
Ceiling side



Assemble the fixtures (shelf brackets, rod brackets, etc.) at least 4 in. away from the ceiling mount for firm support.

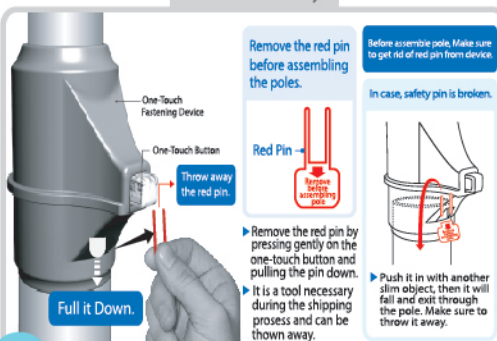
Role of the Rubber Ring

The rubber ring helps adjust the height of the fixtures and prevents them from slipping. The rubber rings should be inserted underneath each shelf bracket. (The rubber rings inserted underneath the shelf brackets are not visible after installation.)

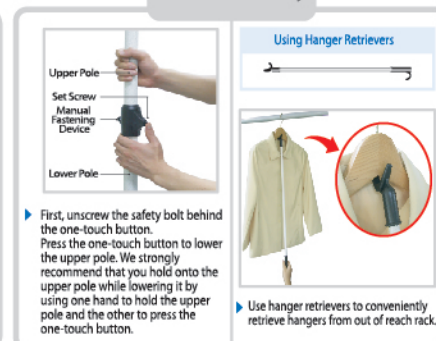


THINGS TO DO BEFORE ASSEMBLY & DISASSEMBLY

Before Assembly



Before Disassembly



COMPLETE PARTS LIST

Product Components Check your inventory before beginning installation.

1 Ceiling Mounts (3)



Safety Bolt (Located behind the rod bracket)
Tighten gently by hand after installing the rods

2 Upper & Lower Poles (3 Sets) 1.10in.



Upper Connecting Pole
1.10in.

Upper Pole
1.10in.

Lower Pole
1.26in.

4 Rod (4 Set)



5 Rod Brackets (8) 1.10in.



6 Rubber Rings (8)



One-Touch Fastening Device

7 Set Screw (3) [Used for the manual fastening device]



3 Floor Mounts (3)



Free Gift: Hanger Retriever (1)



ASSEMBLY INSTRUCTIONS (POLE)

Assemble the parts to the upper and lower poles in order, as shown in the diagram.

Pole 1

- 5 Ceiling Mount
- 1.10in.
- 4 Rod Bracket
- 3 Rubber Ring

- 1.10in.
- 2 Rod Bracket
- 1 Rubber Ring

Rod Bracket



Used to support rods. Please assemble the bracket so that it is U-shaped.

Connect the poles together by inserting the thinner end of the upper connecting pole to the upper pole.

Upper Pole (Thinner Pole)

One-Touch Fastening Device

Lower Pole (Thicker Pole)

- 1 Floor Mounts

Pole 2

- 9 Ceiling Mount
- 1.10in.
- 8 Rod Bracket
- 7 Rubber Ring

- 1.10in.
- 6 Rod Bracket
- 5 Rubber Ring

- 1.10in.
- 4 Rod Bracket
- 3 Rubber Ring

- 1.10in.
- 2 Rod Bracket
- 1 Rubber Ring

Upper Connecting Pole (Thinner Pole)

Connect the poles together by inserting the thinner end of the upper connecting pole to the upper pole.

Upper Pole (Thinner Pole)

One-Touch Fastening Device

Lower Pole (Thicker Pole)

- 1 Floor Mounts

Pole 3

- 5 Ceiling Mount

- 1.10in.
- 4 Rod Bracket
- 3 Rubber Ring

- 1.10in.
- 2 Rod Bracket
- 1 Rubber Ring

Upper Connecting Pole (Thinner Pole)

Connect the poles together by inserting the thinner end of the upper connecting pole to the upper pole.

Upper Pole (Thinner Pole)

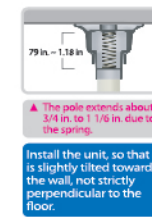
One-Touch Fastening Device

Lower Pole (Thicker Pole)

- 1 Floor Mounts

INSTALLATION (POLE)

To Install the Poles,



Install the poles after the lower pole is securely attached to the floor mount.



Explanation

- 1,2 At the desired location, hold the lower pole with one hand and the upper pole with the other and push it up to the ceiling so that the pole is fixed upright to both the ceiling and the floor. (Make sure the pole is fixed securely on the ceiling by pushing the pole up as far as you can (which can extend up to 1 1/8 in. due to the spring mechanism in the ceiling mount).)
- 3 To prevent the fixed pole from falling, hold the upper pole with one hand and use the other hand to tighten the set screw securely.

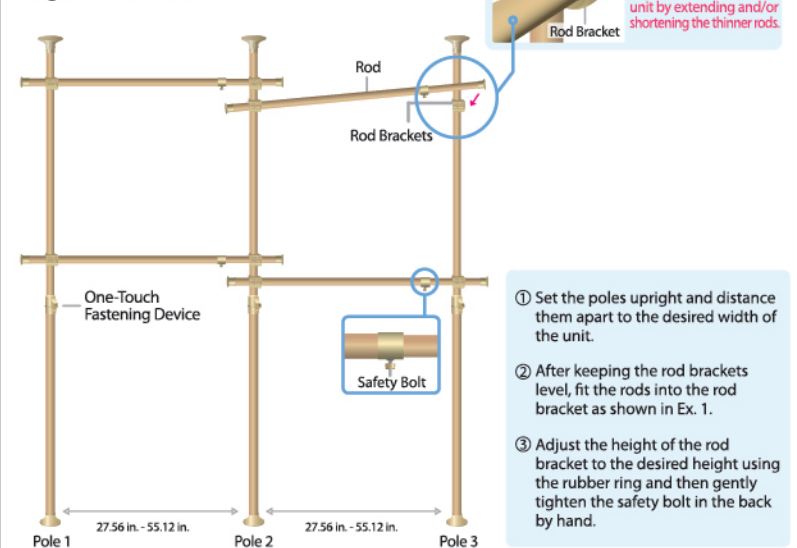
INSTALLATION (POLE & OTHER FIXTURES)

To install poles and other fixtures,

*Product Dimensions:

width : 78.74 in.-134in.

height : 67 in.- 117 in.



- ① Set the poles upright and distance them apart to the desired width of the unit.
- ② After keeping the rod brackets level, fit the rods into the rod bracket as shown in Ex. 1.
- ③ Adjust the height of the rod bracket to the desired height using the rubber ring and then gently tighten the safety bolt in the back by hand.

The rubber ring helps keep the fixtures in place and should be inserted underneath each fixture. (The rubber rings inserted underneath the fixtures are not visible after installation.)