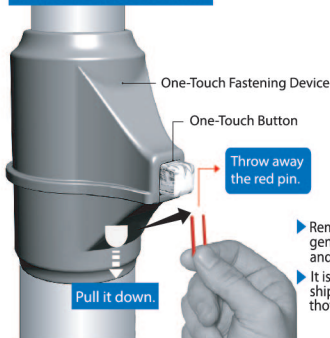


SAFETY PRECAUTIONS

⚠ Please note that this unit includes poles and rods that are made out of steel, which can cause bodily injuries and/or damages to the floor if dropped or held in an improper manner during assembly.

1. This unit is designed for use by keeping the poles fixed to the floor and the ceiling. Therefore, it is not safe for children to climb or hang on the unit. Children should be under adult supervision at all times to prevent any injuries.
2. Overloading the unit might cause it to become unstable and either tip or collapse, which may cause serious bodily injury and/or damage to personal possessions.
3. In order to prevent any accidental collapses due to improper care, install the unit, so that it is slightly tilted towards the wall, not perpendicular to the floor.
4. We recommend that you frequently examine the unit for any loose bolts or wobbling.

BEFORE ASSEMBLY



Remove the red pin before assembling the poles.

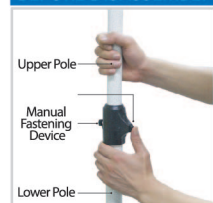
Remove the red pin by pressing gently on the one-touch button and pulling the pin down.

It is a tool necessary during the shipping process and can be thrown away.

Before assemble pole, Make sure to get rid of red pin from device.

In case, safety pin is broken.

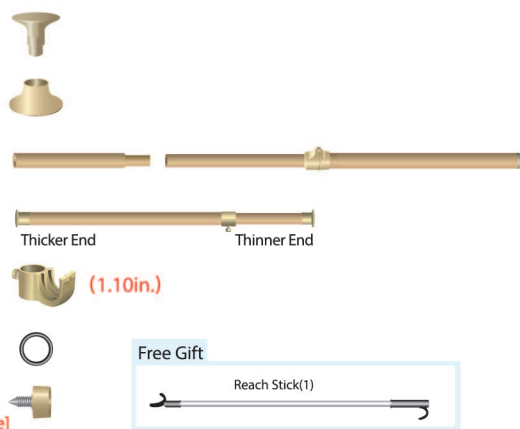
BEFORE DISASSEMBLY



First, unscrew the safety bolt behind the one-touch button. Press the one-touch button to lower the upper pole. We strongly recommend that you hold onto the upper pole while lowering it by using one hand to hold the upper pole and the other to press the one-touch button.

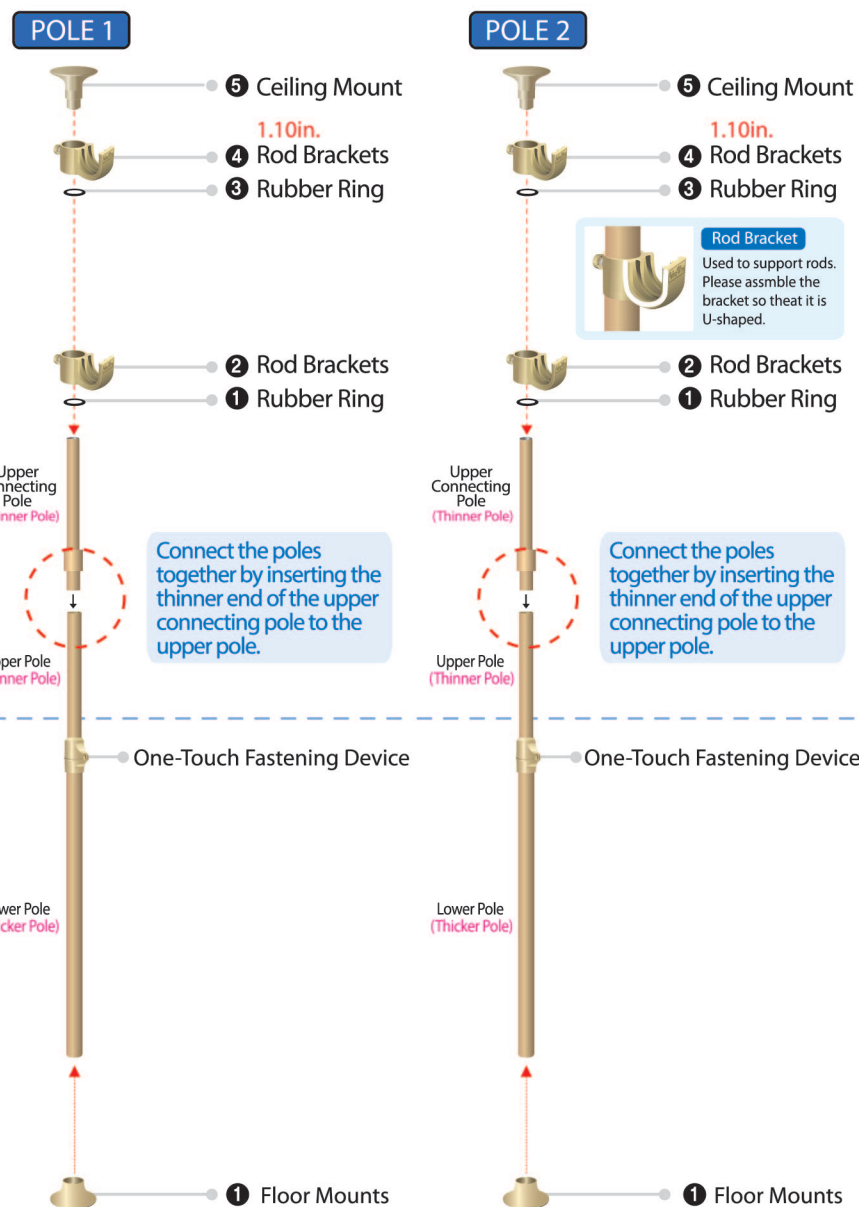
COMPLETE PARTS LIST

- 1 Ceiling Mounts (2)
- 2 Floor Mounts (2)
- 3 Upper Connection Poles & Upper & Lower Poles (2 Sets)
- 4 Hanger Rods (2 Sets)
- 5 Rod Brackets (4)
- 6 Rubber Rings (4)
- 7 Safety Bolts (2)
[Used for One-Touch Fastening Device]



ASSEMBLY INSTRUCTIONS (POLE)

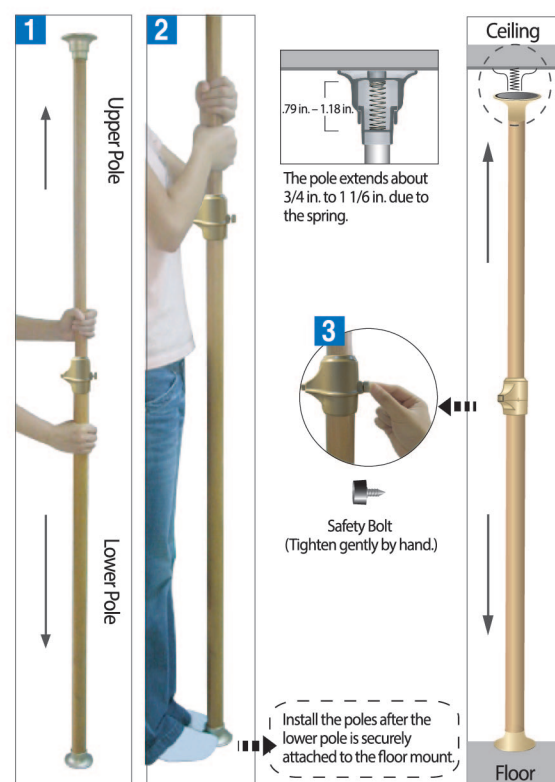
*Assemble the parts to the upper and lower poles in order, as shown in the diagram.



The rubber ring helps keep the fixtures in place and should be inserted underneath each rod bracket. (The rubber rings inserted underneath the rod brackets are not visible after installation.)

INSTALLATION (POLE)

To Install the Poles,

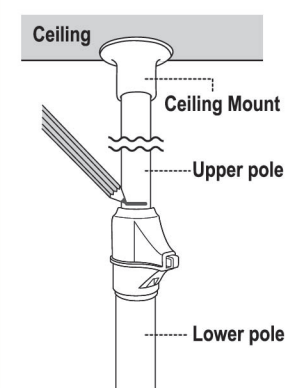


Explanation:

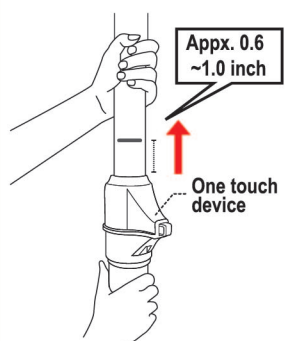
1. At the desired location, hold the lower pole with one hand and the upper pole with the other and push it up to the ceiling so that the pole is fixed upright to both the ceiling and the floor. (Make sure the pole is fixed securely on the ceiling by pushing the pole up as far as you can (which can extend up to 1 1/6 in. due to the spring mechanism in the ceiling mount))
2. After installing the pole, tighten the safety bolt behind the one-touch fastening device by hand for safer use of the unit.

INSTALLATION TIP !!!

[Figure 1]
Pull the upper pole slightly upward until the ceiling mount touches the ceiling. Mark it with a pencil as shown in Figure 1.



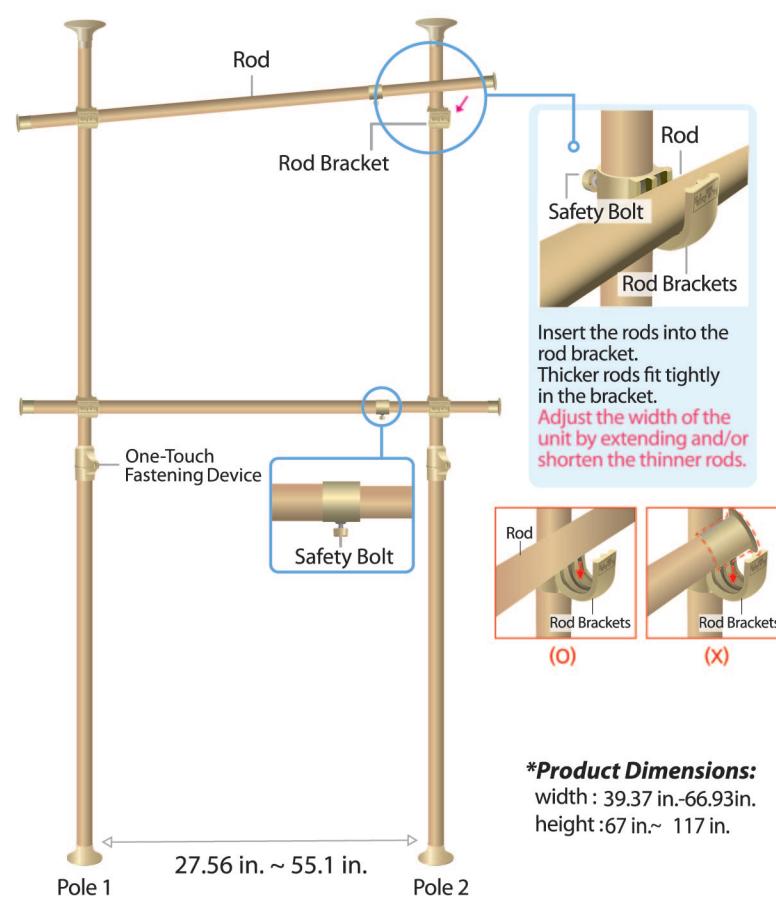
[Figure 2]
Push the upper pole to the ceiling as hard as you can. Make sure to have a gap about 15-25mm (0.6~1 inch) between marked line and the One-Touch device.



*If the marked line is too low or is not visible, pull the upper pole against the ceiling firmly to check if it is assembled properly.

INSTALLATION (POLE & OTHER FIXTURES)

To install poles and other fixtures,



*Product Dimensions:
width : 39.37 in.-66.93 in.
height : 67 in.- 117 in.

1. Set the poles upright and distance them apart to the desired width of the unit.
2. After keeping the rod brackets level, fit the rods into the rod bracket as shown in the diagram.
3. Adjust the height of the rod brackets to the desired height using rubber rings and then gently tighten the safety bolt in the back by hand.

ADES USA INC. (Princehanger)

Website : <https://www.princehanger.com> Email : Princehanger@gmail.com / sales@princehanger.com
Customer center : 847-769 6693 Hours : Monday ~ Friday / 8AM ~ 5PM (EST)