

**! IMPORTANT- PLEASE READ BEFORE ASSEMBLY**

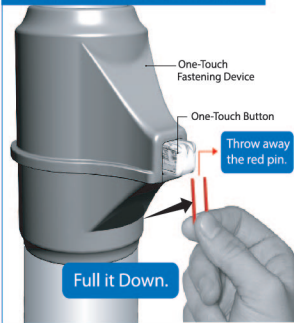
## Safety Precautions



This product is made with steal pipe material. Please allow to assemble the product with a very special care to not drop it or hold it upside down. It may cause some damages on your floor or hurt your feet.

1. Please assemble after you check the surface of ceiling and avoid any plywood or gypsum board ceilings.
2. In case of the product falls down, please pay special attention to avoid any accidents or damage objects that are located closely.
3. Please install the upper pole tilted slightly to the wall to avoid any issues.
4. Please check the product safety frequently (rattling sound, shaking, and lose bolts and nuts).
5. Please contact our customer service (princehanger@gmail.com) if you experience any damaged or lost products.
6. All the products are the same with different color options.

## BEFORE ASSEMBLY

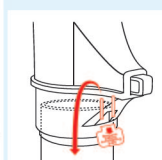


Remove the red pin before assembling the poles.



- ▶ Remove the red pin by pressing gently on the one-touch button and pulling the pin down.
- ▶ It is a tool necessary during the shipping process and can be thrown away.

In case, safety pin is broken.



- ▶ Push it in with another slim object, then it will fall and exit through the pole. Make sure to throw it away.

## PRODUCT COMPONENTS \*Check your inventory before beginning installation.

### 1 Upper & Lower Pole (1 Set)



### 2 Upper Connecting Poles(1)



### 3 Safety Bolt (1)

(Used for the one-touch fastening device)

### 4 Ceiling Mount (1)



### 5 Floor Mount (1)



### 6 Shelves (4)



### 7 Rubber Rings (4)

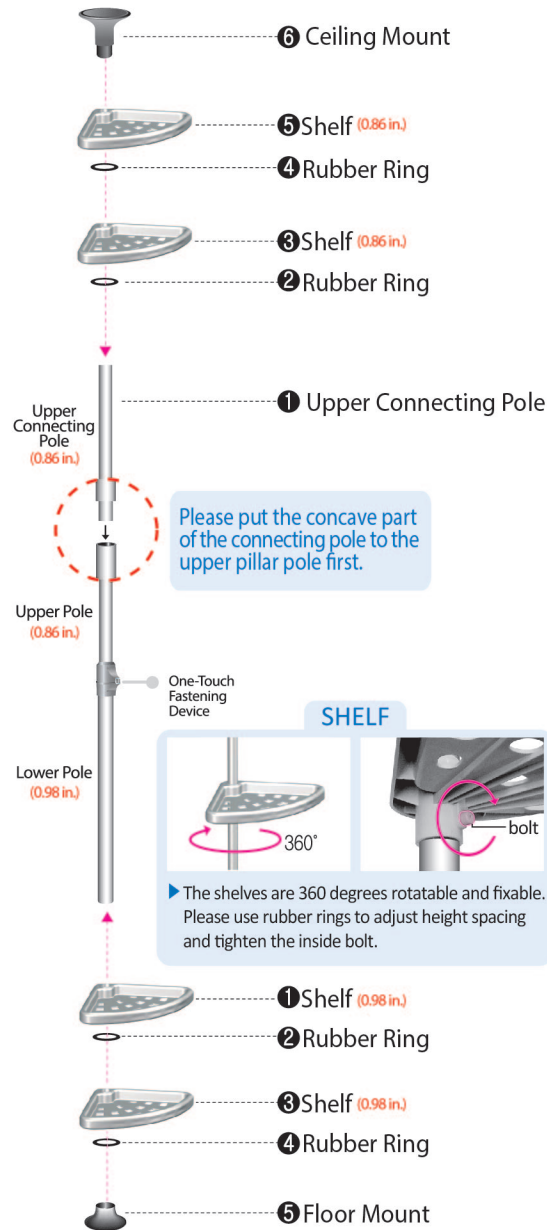
Please make sure to dry your hands and poles before installing rubber rings.



**PLEASE INSTALL ON A FLAT SURFACE.**  
Not doing so might cause it to become unstable and/or collapse.

## Assembly Instructions

- ▶ Please make sure to put components to the pole in order of number.
- ▶ If you have low ceiling, you can install the product without connecting pole.

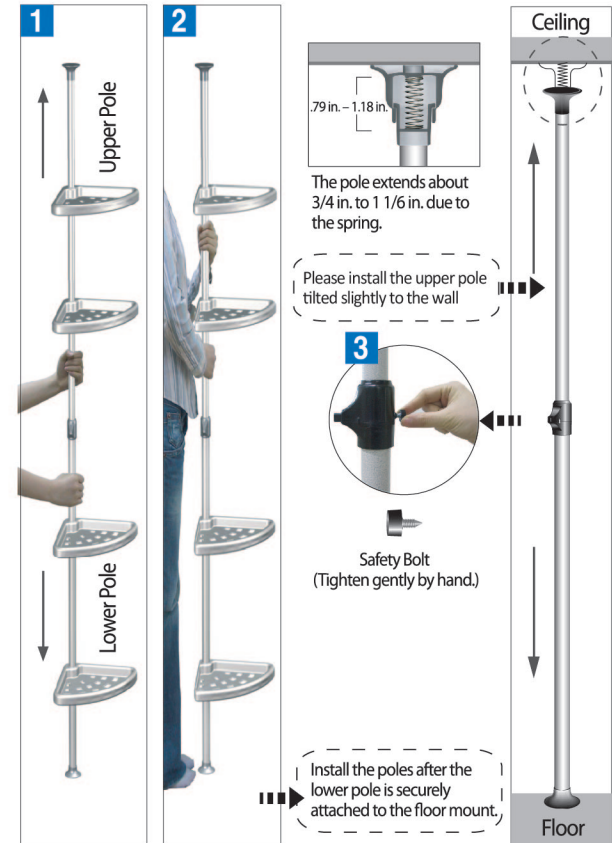


- ▶ The rubber ring helps keep the fixtures in place and should be inserted underneath each rod bracket.  
(The rubber rings inserted underneath the rod brackets are not visible after installation.)



The installation instructions are same for all products, regardless of the differences in color.

## To Install the Poles,



## Explanation:

- 1 2 At the desired location, hold the lower pole with one hand and the upper pole with the other and push it up to the ceiling so that the pole is fixed upright to both the ceiling and the floor. (Make sure the pole is fixed securely on the ceiling by pushing the pole up as far as you can (which can extend up to 1 1/6 in. due to the spring mechanism in the ceiling mount))
- 3 After installing the pole tighten the safety bolt behind the one-touch fastening device by hand for safer use of the unit.

Notice: If the poles are not fixed properly, it may fall down, Please allow using extra power to secure the upper and lower poles.

\*Product Dimensions:

- Install Diameter : 10.63 in.
- Height : 59 in. ~ 110 in.
- Shelf Length : 13.78 in, Width : 10.23 in

