

## SAFETY PRECAUTIONS

**⚠ Please follow these safety precautions in order to ensure proper installation and to prevent any bodily injuries and structural failures.**

Please note that this unit includes poles and rods that are made out of steel, which can cause bodily injuries and/or damages to the floor if dropped or held in an improper manner during assembly.

1. This unit is designed for use by keeping the poles fixed to the floor and the ceiling. Therefore, it is not safe for children to climb or hang on the unit. Children should be under adult supervision at all times to prevent any injuries.
2. Overloading the unit might cause it to become unstable and either tip or collapse, which may cause serious bodily injury and/or damage to personal possessions.
3. In order to prevent any accidental collapses due to improper care, install the unit, so that it is slightly tilted towards the wall, not perpendicular to the floor.
4. We recommend that you frequently examine the unit for any loose bolts or wobbling.

## Please note

The unit may collapse if it is not securely fixed to the floor or if it is installed to a weak part of the ceiling.

## Attaching the Poles to the Floor Mounts

The upper poles are thinner than the lower poles. (Make sure the upper poles attach to the ceiling mount and lower poles to the floor mount during installation.)

## Differentiating Between the Poles

The upper poles are thinner than the lower poles. (Make sure the upper poles attach to the ceiling mount and lower poles to the floor mount during installation.)

## Example

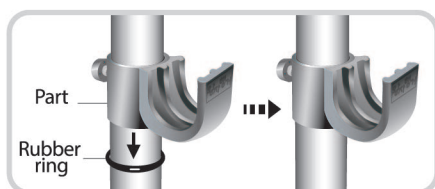
Ceiling side



Assemble the fixtures (shelf brackets, rod brackets, etc.) at least 4 in. away from the ceiling mount for firm support.

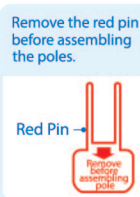
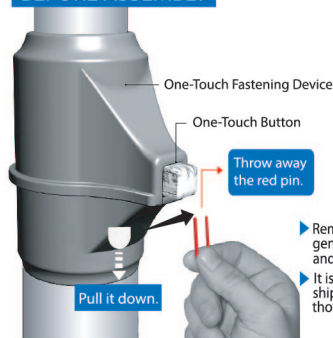
## Role of the Rubber Ring

The rubber ring helps adjust the height of the fixtures and prevents them from slipping. The rubber rings should be inserted underneath each shelf bracket. (The rubber rings inserted underneath the shelf brackets are not visible after installation.)

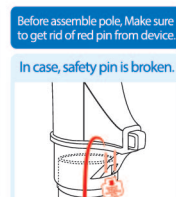


## THINGS TO DO BEFORE ASSEMBLY &amp; DISASSEMBLY

## BEFORE ASSEMBLY

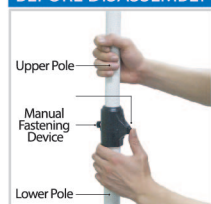


- Remove the red pin by pressing gently on the one-touch button and pulling the pin down.
- It is a tool necessary during the shipping process and can be thrown away.



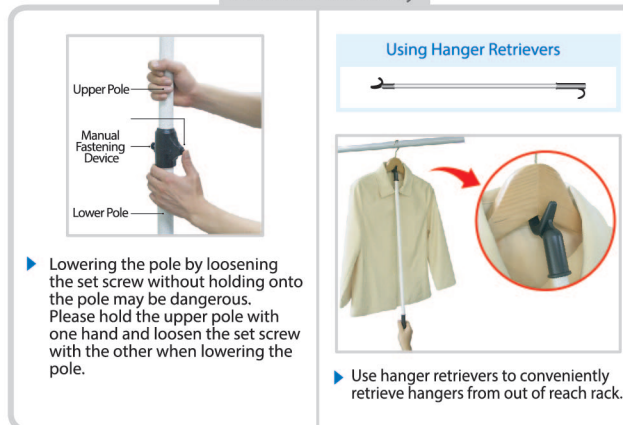
- Before assemble pole, Make sure to get rid of red pin from device.
- In case, safety pin is broken.
- Push it in with another slim object, then it will fall and exit through the pole. Make sure to throw it away.

## BEFORE DISASSEMBLY



- First, unscrew the safety bolt behind the one-touch button. Press the one-touch button to lower the upper pole. We strongly recommend that you hold onto the upper pole while lowering it by using one hand to hold the upper pole and the other to press the one-touch button.

## Before Disassembly



- Lowering the pole by loosening the set screw without holding onto the pole may be dangerous. Please hold the upper pole with one hand and loosen the set screw with the other when lowering the pole.

## Using Hanger Retrievers



- Use hanger retrievers to conveniently retrieve hangers from out of reach racks.

## COMPLETE PARTS LIST

## Product Components Check your inventory before beginning installation.

## 1 Ceiling Mounts (4)



- Safety Bolt (Located behind the rod bracket) Tighten gently by hand after installing the rods

## 2 Upper &amp; Connection &amp; Lower Poles (4 Sets)



Upper Pole (1.26in.)



Lower Pole (1.5in.)

## 4 Hanger Rods (6 Set)

Thicker End Thinner End

5 Rod Brackets (12) (1.26in.)

6 Rubber Rings (12)

One-Touch Fastening Device

7 Safety Bolts (4) (Used for the one-touch fastening device)

## 3 Floor Mounts (4)

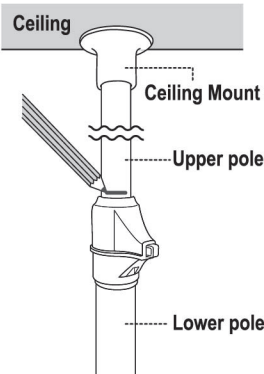


Free Gift Reach Stick(1)

## INSTALLATION TIP !!!

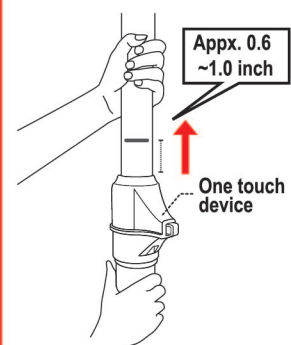
## [Figure 1]

Pull the upper pole slightly upward until the ceiling mount touches the ceiling. Mark it with a pencil as shown in Figure 1.



## [Figure 2]

Push the upper pole to the ceiling as hard as you can. Make sure to have a gap about 15-25mm(0.6~1 inch) between marked line and the One-Touch device.

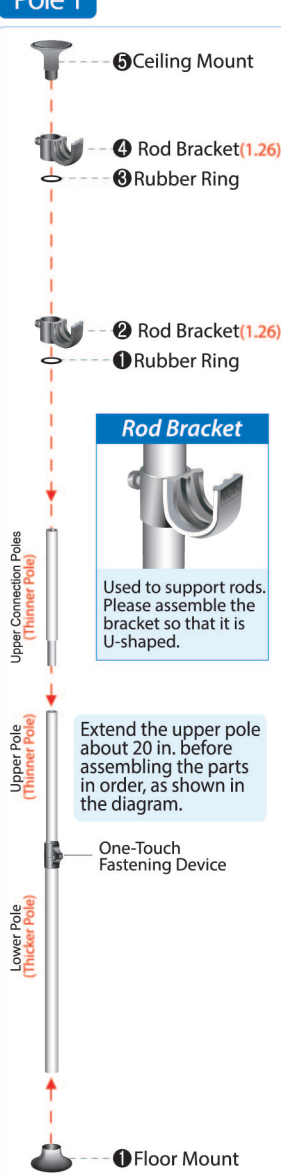


If the marked line is too low or is not visible, pull the upper pole against the ceiling firmly to check if it is assembled properly.

## ASSEMBLY INSTRUCTIONS (POLE)

Assemble the parts to the upper and lower poles in order, as shown in the diagram.

## Pole 1



## Pole 2



## Pole 3



## Pole 4



## Rod Bracket

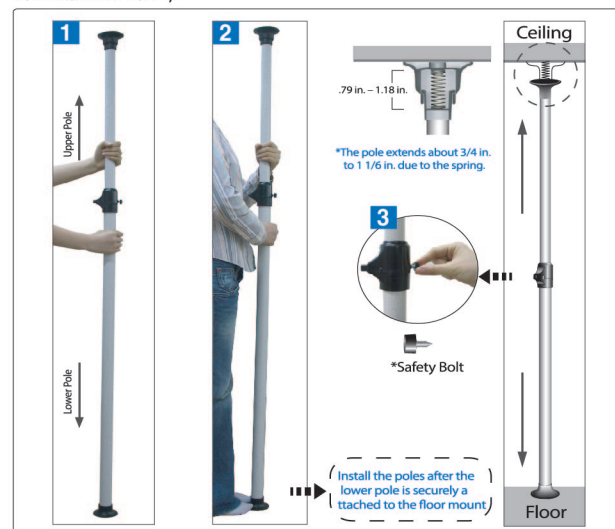


Extend the upper pole about 20 in. before assembling the parts in order, as shown in the diagram.

The rubber ring helps keep the fixtures in place and should be inserted underneath each rod bracket. (The rubber rings inserted underneath the rod brackets are not visible after installation.)

## INSTALLATION (POLE)

To Install the Poles,



## Explanation

1,2 At the desired location, hold the lower pole with one hand and the upper pole with the other and push it up to the ceiling so that the pole is fixed upright to both the ceiling and the floor. (Make sure the pole is fixed securely on the ceiling by pushing the pole up as far as you can (which can extend up to 1 1/6 in. due to the spring mechanism in the ceiling mount))

3 After installing the pole, tighten the safety bolt behind the one-touch fastening device by hand for safer use of the unit.

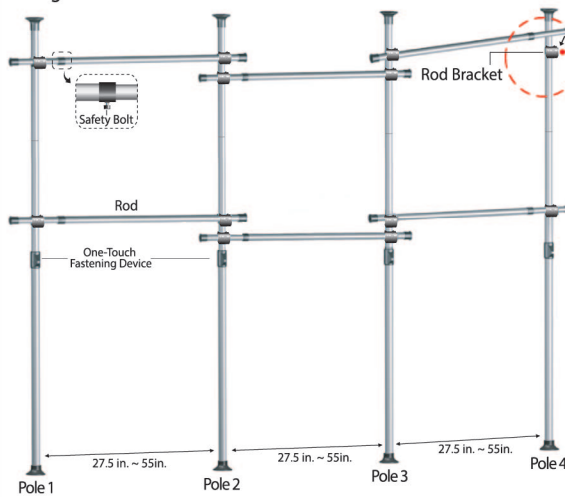
## INSTALLATION (POLE &amp; OTHER FIXTURES)

To install poles and other fixtures,

## \*Product Dimensions:

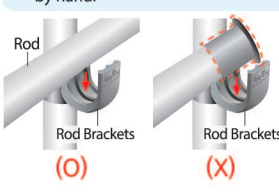
Width : 117in. ~ 200in.

Height : 67in. ~ 117in.



Ex. Rod Insert the rod into the rod bracket. After adjusting the height of the rod bracket, tighten the safety bolt.

- 1 Set the poles upright and distance them apart to the desired width of the unit.
- 2 After keeping the rod brackets level, fit the rods into the rod bracket as shown in Ex. 1.
- 3 Adjust the height of the rod bracket to the desired height using the rubber ring and then gently tighten the safety bolt in the back by hand.



ADES USA INC. (Princehanger)

Website : <https://www.princehanger.com> Email : [Princehanger@gmail.com](mailto:Princehanger@gmail.com) / [sales@princehanger.com](mailto:sales@princehanger.com)

Customer center : 847-769 6693 Hours : Monday ~ Friday / 8AM ~ 5PM (EST)