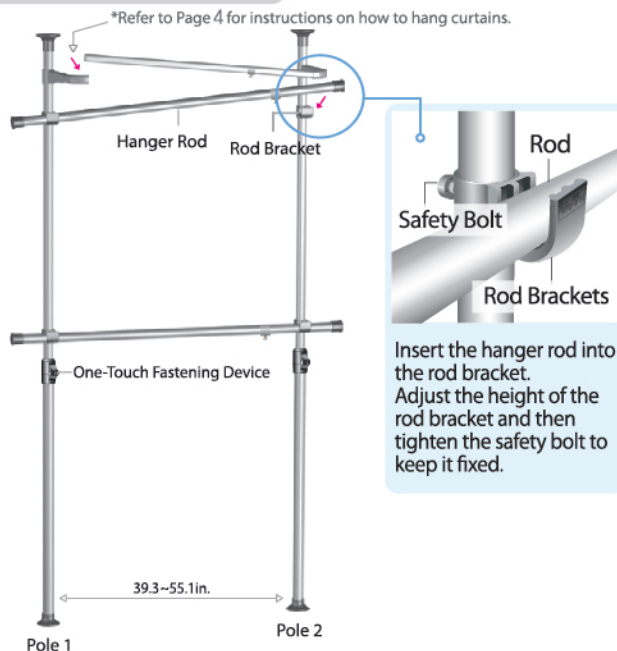


## INSTALLATION (POLE & OTHER FIXTURES)

To install poles and other fixtures,



- ① Set the poles upright and distance them apart to the desired width of the unit.
- ② After keeping the rod brackets level, fit the rods into the rod bracket as shown in the diagram.
- ③ Adjust the height of the rod brackets to the desired height using rubber rings and then gently tighten the safety bolt in the back by hand.

Insert the hanger rod into the rod bracket. Adjust the height of the rod bracket and then tighten the safety bolt to keep it fixed.

**\*Product Dimensions:**  
Width: 39.3~55.1 in  
Height: 67~117 in.  
Depth: 13.8 in.

## SAFETY PRECAUTIONS



Please follow these safety precautions in order to ensure proper installation and to prevent any bodily injuries and structural failures.

Please note that this unit includes poles and rods that are made out of steel, which can cause bodily injuries and/or damages to the floor if dropped or held in an improper manner during assembly.

1. This unit is designed for use by keeping the poles fixed to the floor and the ceiling. Therefore, it is not safe for children to climb or hang on the unit. Children should be under adult supervision at all times to prevent any injuries.

2. Overloading the unit might cause it to become unstable and either tip or collapse, which may cause serious bodily injury and/or damage to personal possessions.

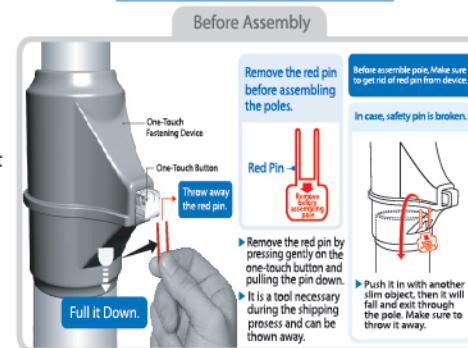
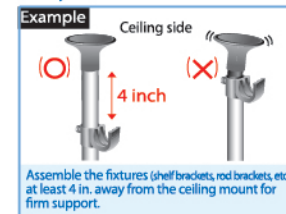
3. In order to prevent any accidental collapses due to improper care, install the unit, so that it is slightly tilted towards the wall, not perpendicular to the floor.

4. We recommend that you frequently examine the unit for any loose bolts or wobbling.

5. The curtains should be hand washed. They are not machine-washable.

### Please note

The unit may collapse if it is not securely fixed to the floor or if it is installed to a weak part of the ceiling.



To Hang Curtains

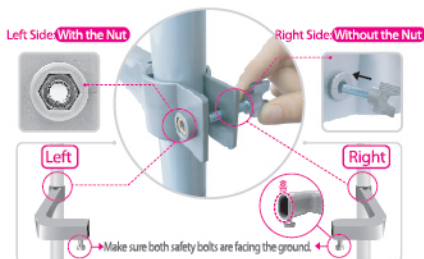
## INSTALLATION (CURTAINS)

### Installing Curtain Rod Brackets (1)

**\*Important: Please insert the wedge.**

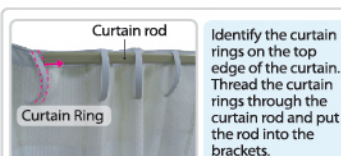


**\*Tighten the tie bolt on the other side of the nut.**



Keeping the curtain rod brackets level, attach them to the upper poles. Tighten the tie bolt on the other side of the nut. (The nut is only on one side of the bracket.)

### Installing Curtain Rod Brackets (2)



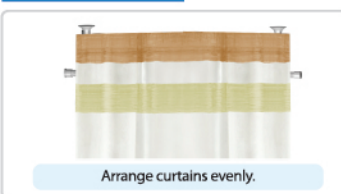
※Curtain Rod  
Thicker End=Curtain Rod Bracket(Left)  
Thinner End=Curtain Rod Bracket(Right)



Identify the curtain rings on the top edge of the curtain. Thread the curtain rings through the curtain rod and put the rod into the brackets.

After mounting the curtain rod onto the rod bracket, tighten the safety bolt.

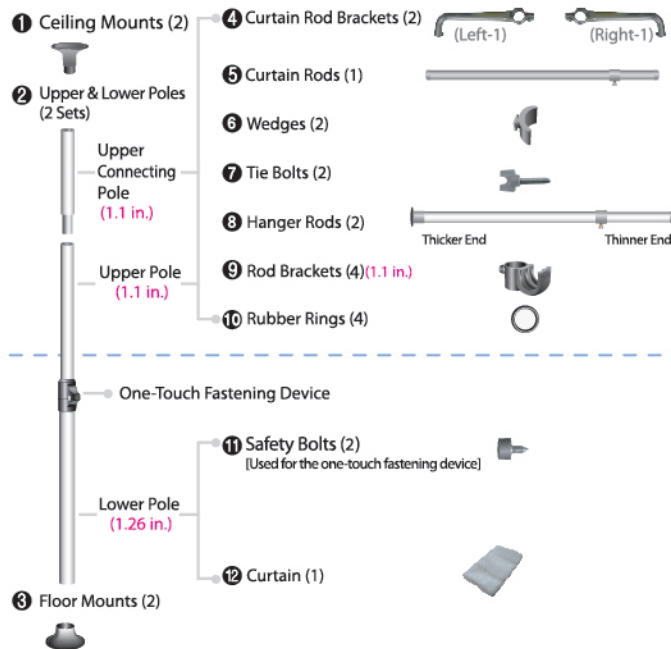
### Finished Product



## COMPLETE PARTS LIST

**\*Check your inventory before beginning installation.**

### Product Components



**Safety Bolt**  
(Located behind the shelf bracket)  
Tighten gently by hand after installing the rods

Free Gift

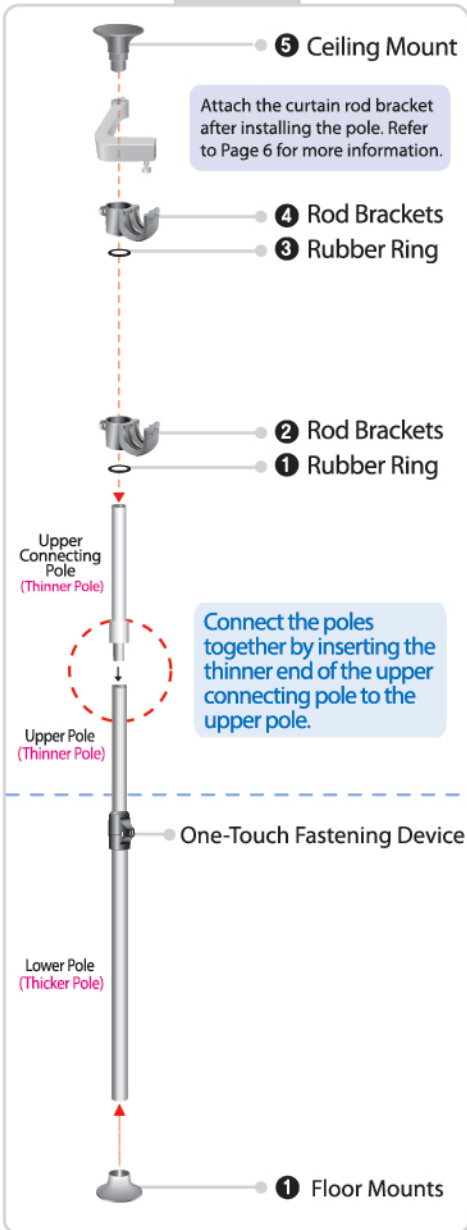


Hanger Retriever (1)

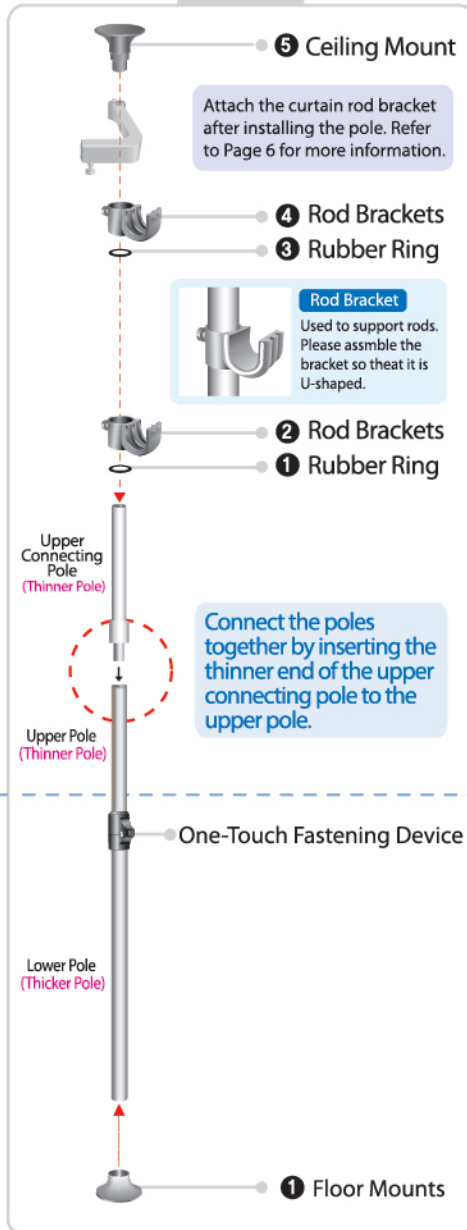
## ASSEMBLY INSTRUCTIONS (POLE)

Assemble the parts to the upper and lower poles in order, as shown in the diagram.

### Pole 1

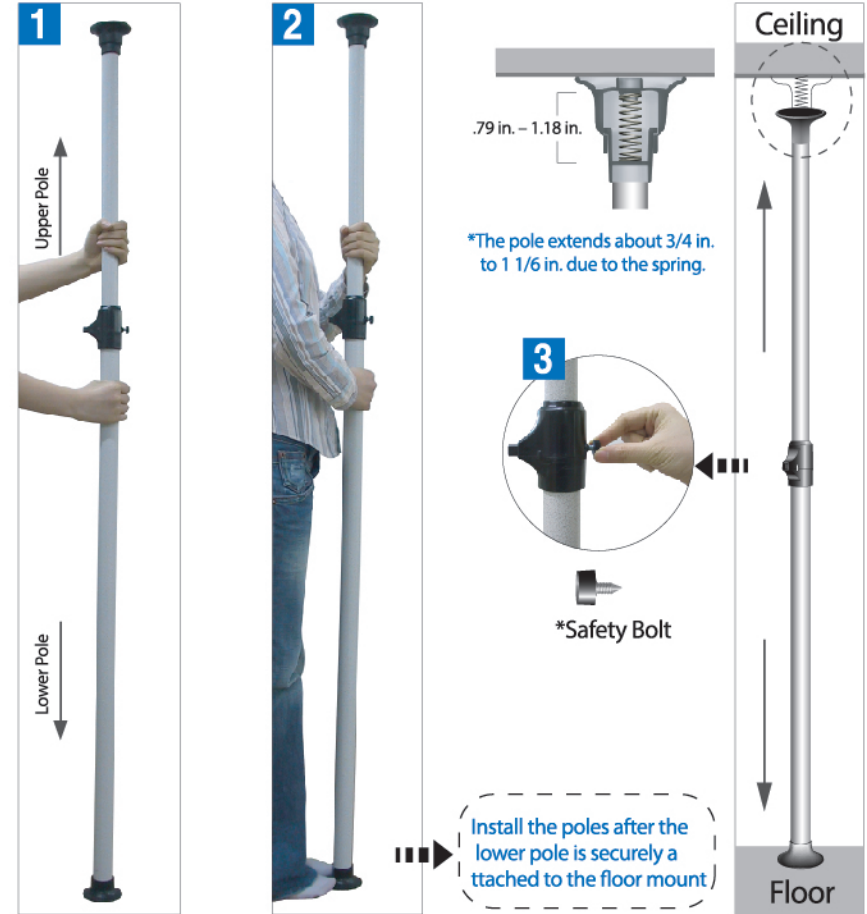


### Pole 2



## INSTALLATION (POLE)

To Install the Poles,



### Explanation

- 1 2** At the desired location, hold the lower pole with one hand and the upper pole with the other and push it up to the ceiling so that the pole is fixed upright to both the ceiling and the floor. (Make sure the pole is fixed securely on the ceiling by pushing the pole up as far as you can (which can extend up to 1 1/6 in. due to the spring mechanism in the ceiling mount))
- 3** After installing the pole, tighten the safety bolt behind the one-touch fastening device by hand for safer use of the unit.

**2** The rubber ring helps keep the fixtures in place and should be inserted underneath all of the fixtures. (The rubber rings inserted underneath the fixtures are not visible after installation.)