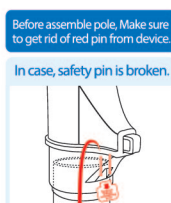
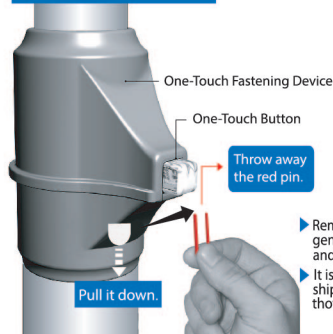


SAFETY PRECAUTIONS

⚠ Please note that this unit includes poles and rods that are made out of steel, which can cause bodily injuries and/or damages to the floor if dropped or held in an improper manner during assembly.

1. This unit is designed for use by keeping the poles fixed to the floor and the ceiling. Therefore, it is not safe for children to climb or hang on the unit. Children should be under adult supervision at all times to prevent any injuries.
2. Overloading the unit might cause it to become unstable and either tip or collapse, which may cause serious bodily injury and/or damage to personal possessions.
3. In order to prevent any accidental collapses due to improper care, install the unit, so that it is slightly tilted towards the wall, not perpendicular to the floor.
4. We recommend that you frequently examine the unit for any loose bolts or wobbling.

BEFORE ASSEMBLY



BEFORE DISASSEMBLY



COMPLETE PARTS LIST

1 Ceiling Mounts (2)

2 Upper Connecting Poles (2) (1.10in.)

3 Upper & Lower Poles (2 Sets)

4 Floor Mounts (2)

5 Shelf Brackets (4) (1.10in.)

Safety Bolt (Located behind the shelf bracket)
Tighten gently by hand after installing the shelf brackets

6 Wire Basket Shelves (2)

7 Rubber Rings (4)

8 Safety Bolts (2)
[Used for the one-touch fastening device]

9 Shelf Brackets (4) (1.26in.)

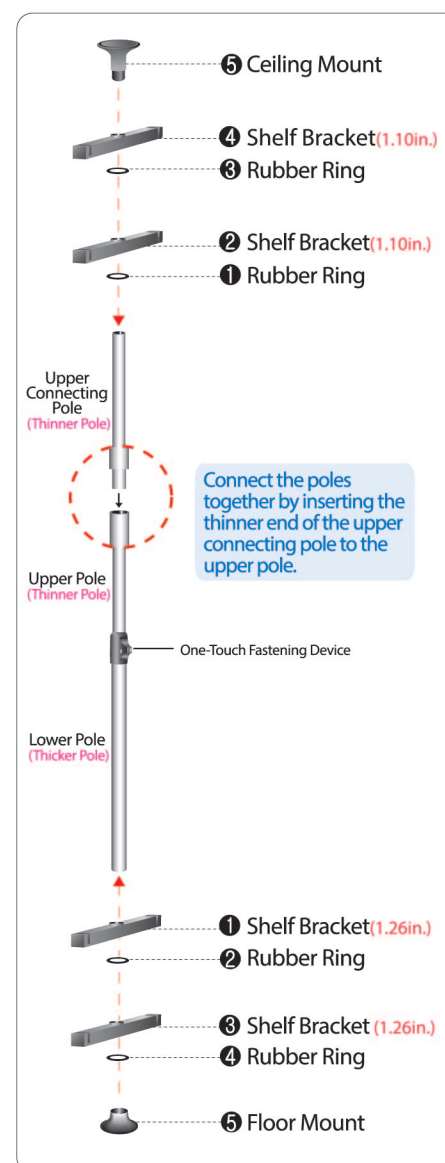
10 Wire Basket Shelves (2)

11 Rubber Rings (4)

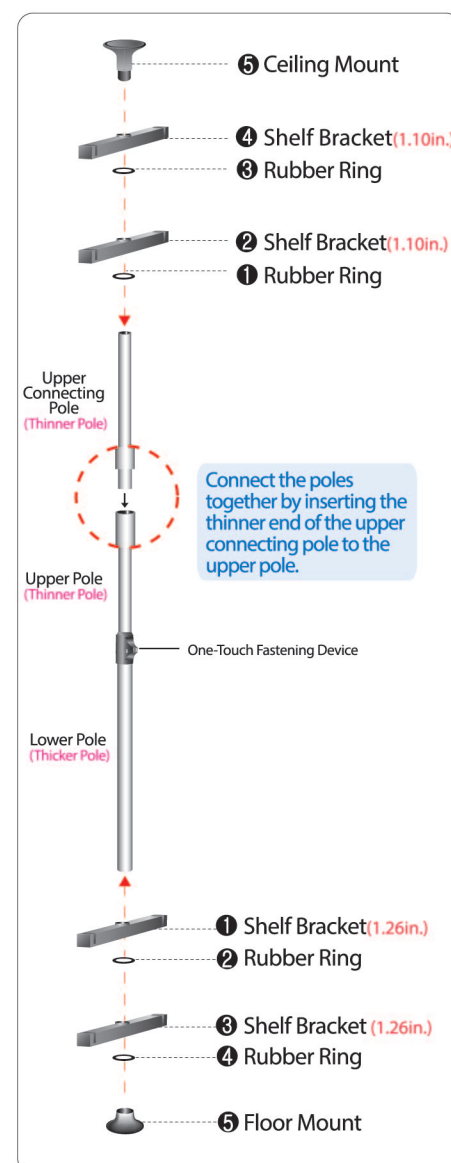
ASSEMBLY INSTRUCTIONS (POLE)

If the ceiling is low, assemble the parts to the upper and lower poles in order without using the upper connecting pole.

POLE 1



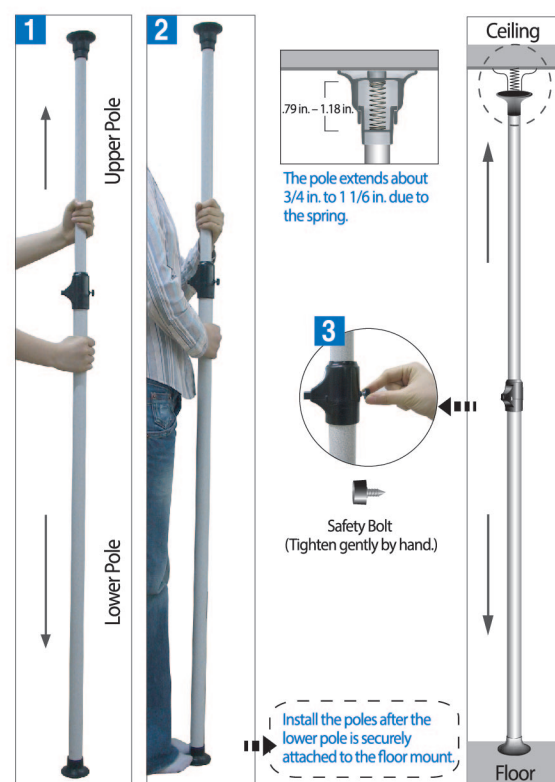
POLE 2



The rubber ring helps keep the fixtures in place and should be inserted underneath each rod bracket. (The rubber rings inserted underneath the rod brackets are not visible after installation.)

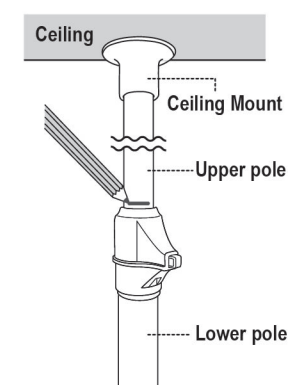
INSTALLATION (POLE)

To Install the Poles,

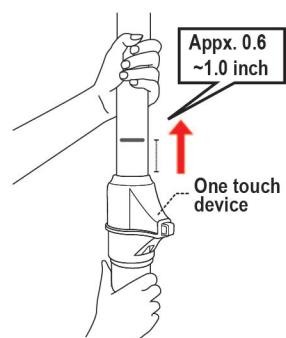


INSTALLATION TIP !!!

[Figure 1]
Pull the upper pole slightly upward until the ceiling mount touches the ceiling. Mark it with a pencil as shown in Figure 1.



[Figure 2]
Push the upper pole to the ceiling as hard as you can. Make sure to have a gap about 15-25mm (0.6~1 inch) between marked line and the One-Touch device.



*If the marked line is too low or is not visible, pull the upper pole against the ceiling firmly to check if it is assembled properly.

Explanation:

1. At the desired location, hold the lower pole with one hand and the upper pole with the other and push it up to the ceiling so that the pole is fixed upright to both the ceiling and the floor. (Make sure the pole is fixed securely on the ceiling by pushing the pole up as far as you can (which can extend up to 1 1/6 in. due to the spring mechanism in the ceiling mount))
2. After installing the pole, tighten the safety bolt behind the one-touch fastening device by hand for safer use of the unit.

ASSEMBLY INSTRUCTIONS (WIRE BASKET SHELVES)



***Product Dimensions:**
Width: 32", Depth: 13.8",
Height: 67" ~ 117"
Wire Basket Shelf: 29.5"x12.6"x1.4"

1. Set the poles upright and distance them apart to the desired width of the shelving.
2. After keeping the shelf brackets level, fit the rods into the shelf bracket as shown in Ex. 1. Each shelf bracket is grooved to fit the rods tightly in place.
3. Adjust the height of the shelf bracket to the desired height using the rubber ring and then gently tighten the safety bolt in the back by hand.

ADES USA INC. (Princehanger)

Website : <https://www.princehanger.com> Email : Princehanger@gmail.com / sales@princehanger.com
Customer center : 847-769 6693 Hours : Monday ~ Friday / 8AM ~ 5PM (EST)