

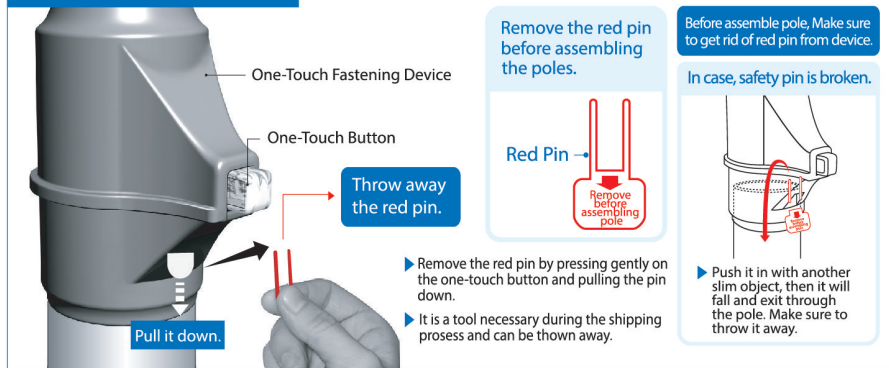
SAFETY PRECAUTIONS

! Please follow these safety precautions in order to ensure proper installation and to prevent any bodily injuries and structural failures.

*Please note that this unit includes poles and rods that are made out of steel, which can cause bodily injuries and/or damages to the floor if dropped or held in an improper manner during assembly.

1. This unit is designed for use by keeping the poles fixed to the floor and the ceiling. Therefore, it is not safe for children to climb or hang on the unit. Children should be under adult supervision at all times to prevent any injuries.
2. Overloading the unit might cause it to become unstable and either tip or collapse, which may cause serious bodily injury and/or damage to personal possessions.
3. In order to prevent any accidental collapses due to improper care, install the unit, so that it is slightly tilted towards the wall, not perpendicular to the floor.
4. We recommend that you frequently examine the unit for any loose bolts or wobbling.

BEFORE ASSEMBLY

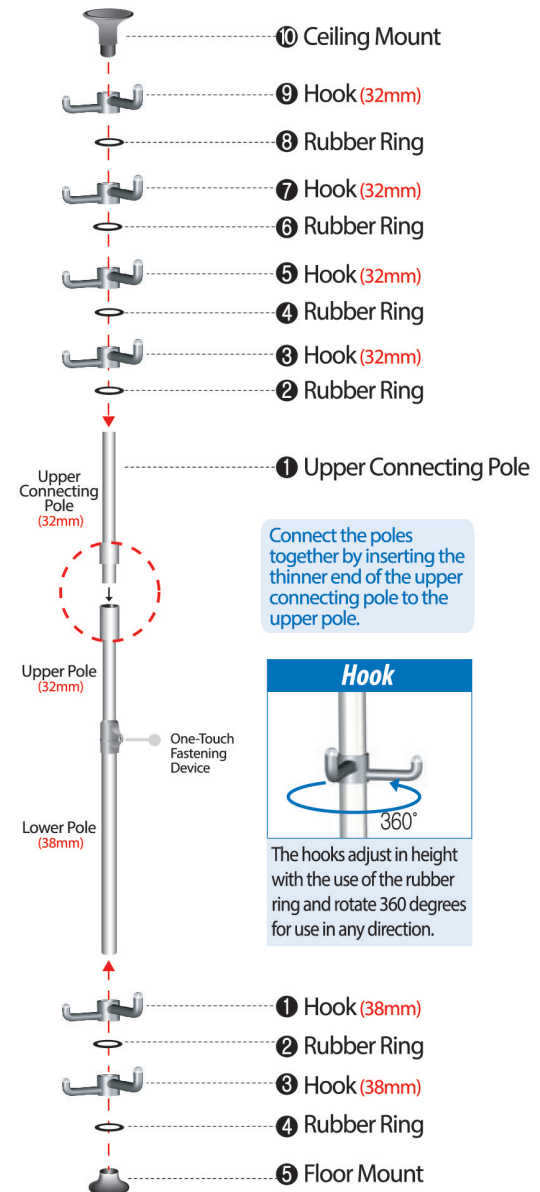


Product Components Check your inventory before beginning installation.

- | | |
|--|---------------------------------------|
| ① Upper & Lower Pole (1 Set) | |
| ② Upper Connecting Poles(1)
(1.26 in.) | ⑤ Floor Mount (1) |
| ③ Safety Bolt (1)
[Used for the one-touch fastening device] | ⑥ Hooks (6)
SMALL - 4 LARGE - 2 |
| ④ Ceiling Mount (1) | ⑦ Rubber Rings (6) |

ASSEMBLY INSTRUCTIONS (POLE)

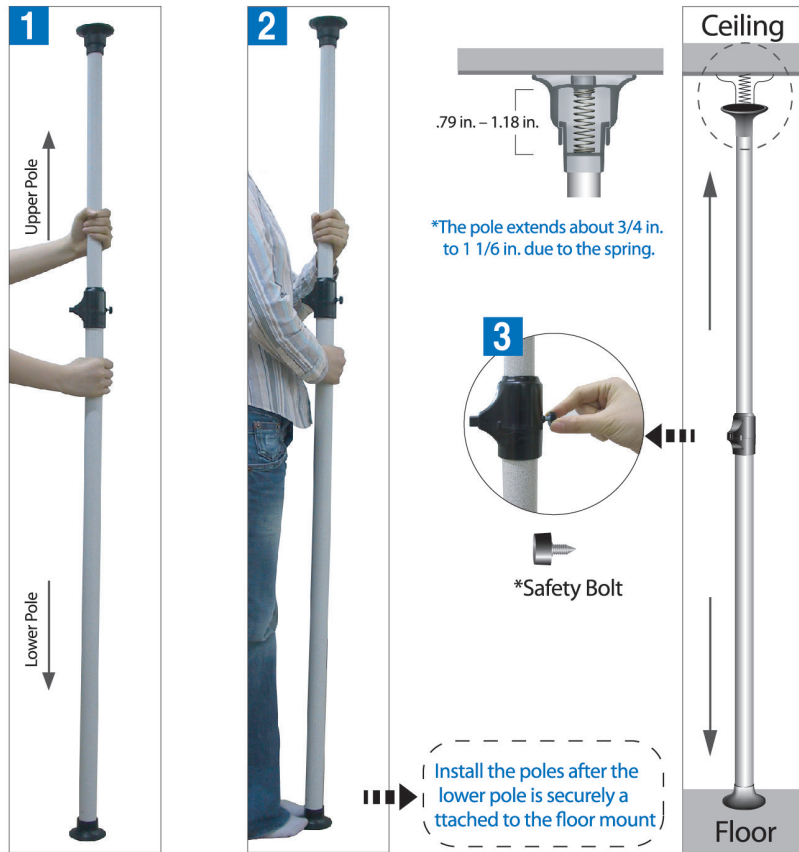
Assemble the parts to the upper and lower poles in order, as shown in the diagram.



- The rubber ring helps keep the fixtures in place and should be inserted underneath each rod bracket. (The rubber rings inserted underneath the rod brackets are not visible after installation.)

INSTALLATION (POLE)

To Install the Poles,



Explanation

- 1 2** At the desired location, hold the lower pole with one hand and the upper pole with the other and push it up to the ceiling so that the pole is fixed upright to both the ceiling and the floor. (Make sure the pole is fixed securely on the ceiling by pushing the pole up as far as you can (which can extend up to 1 1/6 in. due to the spring mechanism in the ceiling mount))
- 3** After installing the pole, tighten the safety bolt behind the one-touch fastening device by hand for safer use of the unit.

FINISHED PRODUCT

*Product Dimensions:

- Install Diameter : 17.8 in.
- Height: 67 in. ~ 117 in.

