

SAFETY PRECAUTIONS



Please follow these safety precautions in order to ensure proper installation and to prevent any bodily injuries and structural failures.

Please note that this unit includes poles and rods that are made out of steel, which can cause bodily injuries and/or damages to the floor if dropped or held in an improper manner during assembly.

1. This unit is designed for use by keeping the poles fixed to the floor and the ceiling. Therefore, it is not safe for children to climb or hang on the unit. Children should be under adult supervision at all times to prevent any injuries.

2. Overloading the unit might cause it to become unstable and either tip or collapse, which may cause serious bodily injury and/or damage to personal possessions.

3. In order to prevent any accidental collapses due to improper care, install the unit, so that it is slightly tilted towards the wall, not perpendicular to the floor.

4. We recommend that you frequently examine the unit for any loose bolts or wobbling.

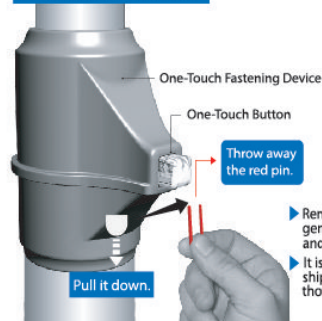
Please note

The unit may collapse if it is not securely fixed to the floor or if it is installed to a weak part of the ceiling.

Differentiating Between the Poles

The upper poles are thinner than the lower poles. (Make sure the upper poles attach to the ceiling mount and lower poles to the floor mount during installation.)

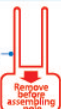
BEFORE ASSEMBLY



Pull it down.

Remove the red pin before assembling the poles.

Red Pin



- ▶ Remove the red pin by pressing gently on the one-touch button and pulling the pin down.
- ▶ It is a tool necessary during the shipping process and can be thrown away.

Before assemble pole, Make sure to get rid of red pin from device.

In case, safety pin is broken.



- ▶ Push it in with another slim object, then it will fall and exit through the pole. Make sure to throw it away.

BEFORE DISASSEMBLY



- ▶ First, unscrew the safety bolt behind the one-touch button. Press the one-touch button to lower the upper pole. We strongly recommend that you hold onto the upper pole while lowering it by using one hand to hold the upper pole and the other to press the one-touch button.

Example



Assemble the fixtures (shelf brackets, rod brackets, etc.) at least 4 in. away from the ceiling mount for firm support.

COMPLETE PARTS LIST

*Check your inventory before beginning installation.

1 Ceiling Mounts (2)



Safety Bolt (Located behind the rod bracket)
Tighten gently by hand after installing the rods

2 Upper Connecting Poles (2) (1.10in.)



Upper Connecting Pole (1.10in.)

3 Upper & Lower Poles (2 Sets)



Upper Pole (1.10in.)

One-Touch Fastening Device

Lower Pole (1.26in.)

5 Shelf Brackets (4) (1.10in.)



6 Wire Basket Shelves (2)



7 Rubber Rings (4)



8 Safety Bolts (2) [Used for the one-touch fastening device]



9 Shelf Brackets (4) (1.26in.)



10 Wire Basket Shelves (2)



11 Rubber Rings (4)



4 Floor Mounts (2)



